

Population dynamics

THE CITY OF TAGUIG

REPUBLIC OF THE PHILIPPINES
CITY OF TAGUIG
TOTAL POPULATION PER YEAR
(PROJECTED) 2000-2010

YEAR	POPULATION (PROJECTED)
2000	467,375
2001	486,818
2002	507,069
2003	528,164
2004	550,135
2005	573,021
2006	596,858
2007	613,343 <i>*ACTUAL</i>
2008	647,350
2009	674,488
2010	702,547

TOTAL POPULATION PROJECTION 2001-2010

BARANGAY	1995	*2000 (Actual)	2001	2002	2003	2004	2005	2006	2007	2008	2009	2010
BAGONG TANYAG	31,190	32,078	33,415	34,805	36,523	37,761	39,332	40,968	43,452	44,448	46,297	48,223
BAGUMBAYAN	23,361	27,058	28,182	29,354	30,575	31,847	33,172	34,552	31,777	37,487	39,046	40,670
BAMBANG	4,623	5,304	5,525	5,755	5,995	6,244	6,504	6,774	6,199	7,350	7,655	7,974
CALZADA-TIPAS	6,753	10,119	10,540	10,976	11,435	11,910	12,406	12,922	14,822	14,019	14,603	15,210
HAGONOY	12,347	16,837	17,535	18,265	19,024	19,816	20,640	21,499	21,181	23,325	24,295	25,306
IBAYO-TIPAS	10,677	13,576	14,142	14,730	15,343	15,981	16,646	17,339	18,031	18,811	19,594	20,409
LIGID-TIPAS	4,811	6,412	6,679	6,957	7,246	7,548	7,862	8,189	7,839	8,884	9,254	9,6539
LOWER BICUTAN	49,199	63,214	65,842	68,581	71,434	74,406	77,501	80,725	79,886	87,581	91,224	95,020
MAHARLIKA VILLAGE	11,268	12,857	13,392	13,950	14,530	15,134	15,764	16,420	16,474	17,814	18,555	19,327
NAPINDAN	6,630	9,751	10,155	10,577	11,018	11,476	11,953	12,450	11,623	13,508	14,070	14,655
PALINGON-TIPAS	6,085	7,159	7,458	7,768	8,091	8,428	8,779	9,144	10,625	9,921	10,333	10,763
STA. ANA	70,296	12,863	13,397	13,955	14,535	15,410	15,770	16,425	14,946	17,621	18,582	19,334
SIGNAL VILLAGE	8,652	82,765	86,211	89,797	93,533	97,423	101,476	105,698	107,906	114,675	119,445	124,414
TUKTUKAN	6,523	7,129	7,424	7,733	8,054	8,390	8,739	9,102	8,011	9,875	10,286	10,714
UPPER BICUTAN	47,041	48,865	50,897	53,014	55,220	57,517	59,909	62,401	62,570	67,701	70,518	73,451
USUSAN	12,586	13,872	14,449	15,050	15,676	16,328	17,007	17,715	25,182	19,219	20,019	20,852
WAWA	6,899	7,180	7,478	7,789	8,113	8,450	8,802	9,168	8,662	9,946	10,360	10,791
WESTERN BICUTAN	61,689	90,336	94,097	98,011	102,089	106,336	110,759	115,367	124,157	125,165	130,372	135,795
FORT BONIFACIO												
TAGUIG	*381,350	*467,375	486,818	507,069	528,164	550,135	573,021	596,858	613,343	647,350	674,488	702,547

Source:

*1995 Population

Actual NSO Census

*2000 Population

Actual NSO Census

2001-2010 Population

Population Projection, as computed using 4.16% growth rate (1995-2000 actual growth rate = 4.15211754%),

using NSO formula:

$$P_n = P_o (1 + r)^t$$

$$r = \text{antilog} \left[\frac{\log (P_n / P_o)}{t} \right] - 1$$

where:

r	=	Population Growth Rate
t	=	time interval between P _n and P _o (exact time difference between censal years)
P _n	=	Population at a later time
P _o	=	Population at an earlier time
P _n	=	P _o (1 + r) ^t , projected population at a later time

REPUBLIC OF THE PHILIPPINES
CITY OF TAGUIG
TOTAL POPULATION AND HOUSEHOLD
(PROJECTED) 2 0 0 7

BARANGAY	PROJECTED POPULATION	PROJECTED HOUSEHOLD
BAGONG TANYAG	42,673	8,535
BAGUMBAYAN	35,989	7,198
BAMBANG	7,056	1,411
CALZADA-TIPAS	13,460	2,692
HAGONOY	22,393	4,479
IBAYO-TIPAS	18,060	3,612
LIGID-TIPAS	8,530	1,706
LOWER BICUTAN	84,083	16,816
MAHARLIKA VILLAGE	17,103	3,421
NAPINDAN	12,968	2,594
PALINGON-TIPAS	9,524	1,905
STA. ANA	17,109	3,421
SIGNAL VILLAGE	110,095	22,019
TUKTUKAN	9,481	1,896
UPPER BICUTAN	64,997	12,999
USUSAN	18,452	3,690
WAWA	9,549	1,910
WESTERN BICUTAN	120,166	24,033
TOTAL	621,688	124,337

**Total Population by Province, City, Municipality and Barangay:
as of August 1, 2007**

Province, City, Municipality and Barangay	Total Population
TAGUIG CITY ^{7 h}	613,343
Bagong Tanyag	43,452
Bagumbayan	31,777
Bambang	6,199
Calzada	14,822
Hagonoy	21,181
Ibayo-Tipas	18,031
Ligid-Tipas	7,839
Lower Bicutan	79,886
Maharlika Village	16,474
Napindan	11,623
Palingon	10,625
Santa Ana	14,946
Signal Village	107,906
Tuktukan	8,011
Upper Bicutan	62,570
Ususan	25,182
Wawa	8,662
Western Bicutan	124,157

7 Converted into a city under Republic Act No. 8487; ratified on April 25, 1998;
Election Protest (EPC) No. 98-102, December 8, 2004.

h With boundary dispute with City of Makati. See footnote for the city.

Taguig 2000
2000 CENSUS OF Population & Housing of the NSO

Population			467,375	
Household Population		464,555		
Male		231,106		
Female		233,449		
Sex Ratio		98.996%		
Increase in Population over 1995	381,350			
Population Growth Rate		4.15%		
Population Density		10,299 persons/sq.km.		
Household Size		4.55 person/household		
Population below 15 yrs. old		117,782		
15-64 yrs. old (productive age)	341,072			
65 yrs. old & over	8,521			
			0-17 yrs. old	188,163
			18 & over	
		279,212		
Dependency Ratio		37.03%		
Young-age dependency ratio (0-14yrs. old)	34.53%			
Old-age dependency ratio (65 yrs. old & over)	2.50%			
Married Persons		202,443	43.31%	
Male		90,386		
Female		104,057		
In-Migrants population		44,332	9.54%	
Dominant Dialect Spoken (Total Households)	102,723 households			
Tagalog	94,184		91.69%	
Ilocano	1,179		1.15%	
Bicol	936		0.91%	
Cebuano	884		0.86%	
Religion (Households Population)	464,555			
Roman Catholic		404,280	87.03%	
Islam		13,870	2.99%	
Iglesia ni Cristo				12,937
Evangelicals		9,383	2.02%	
Differently Able (Disabled-persons)	3,505	0.75%		
Male		1,665		
Female		1,840		
Type of Disability				
Low Vision		1,453		
Mentally Ill		439		
Loss of one or both arms/hands	232			
Mentally retarded		229		
Quadriplegic		164		
Literacy Rate				98.11%
Total literate		340,244		
Total Illiterate		6,547		
Better educated	260,576	65.07%		
No Grade completed	9,812	2.45%		

TAGUIG Poverty Mapping

Demography

Total land area (km2)		45.382	NSO, 2000 Census of Pop.& Housing
Total no. of barangays	21		NSO, 2000 Census of Pop.& Housing
Total population	467,375		NSO, 2000 Census of Pop.& Housing
Total no. of households	102,723		NSO, 2000 Census of Pop.& Housing
Population density (per km2)	13,869		NSO, 2000 Census of Pop.& Housing

Economic and Employment

Poverty incidence		4.90%	Natl. Statistical Coordination Board (NSCB),2000
Poverty incidence by population	6.7%		Natl. Statistical Coordination Board (NSCB),2000
No. of poor	31,314		Natl. Statistical Coordination Board (NSCB),2000
Unemployment rate		17.40%	Natl. Statistical Coordination Board (NSCB),2000

No. of OFW's

No. of active coops		35,341	Natl. Statistical Coordination Board (NSCB),2000
		57	Cooperative Development Authority, 2004

Housing and Land Tenure

No. of Informal Settlers (HHs)	21,931		HUDCC, 2000
Percentage of Informal settlers to total HHs		33.70	HUDCC, 2000

Health and Sanitation

Maternal death rate		1.04	DOH-NCR, 2003
Infant death rate	20.56		DOH-NCR, 2003
Malnutrition rate			
Below normal-low		2.14%	DOH-NCR, 2003
Below normal-very low	0.26%		DOH-NCR, 2003
Households served with safe water		85.46%	DOH-NCR, 2003
Households with sanitary toilets		83.30%	DOH-NCR, 2003
Households with satisfactory garbage disposal		81.6%	DOH-NCR, 2003
Households with complete basic sanitation facilities		83.30%	DOH-NCR, 2003
No. and Ratio of LGU Facilities			
No. of Health Centers		21	DOH-NCR, 2003
Ratio to population		1:27,236	DOH-NCR, 2003
Distribution of Hospitals			
Government hospital		1	DOH-NCR, 2003
Private hospital	4		DOH-NCR, 2003
Hospital Beds (Government & private) and Bed Population Ratio			
Total beds	137		DOH-NCR, 2003
Bed population ratio		1:4,175	DOH-NCR, 2003
TB cases		104.7	DOH-NCR, 2003
Diarrhea cases		534.7	DOH-NCR, 2003
Dengue fever cases		4.2	DOH-NCR, 2003
Bronchitis/Bronchiolitis cases		1,223.7	DOH-NCR, 2003
Pneumonia cases		495.3	DOH-NCR, 2003

Education

Cohort Survival rate			
Secondary	81.36%		DepEd-NCR, 2004

Room student ratio

Primary	103.13		DepEd-NCR, 2004
Secondary	113.44		DepEd-NCR, 2004
Teacher student ratio			
Primary	48.12		DepEd-NCR, 2004
Secondary	47.13		DepEd-NCR, 2004

Household head's highest grade completed (Elementary)		17.13%	NSO, 2000 Census on Population and Housing
Household head's highest grade completed (High school)		44.70%	NSO, 2000 Census on Population and Housing

Human Rights			
No. of human rights cases or complaints	22	Commission on Human Rights, 2004	
Peace & Order			
Average Monthly Crime rate (AMCR)	23.92%	NCRPO, Crime Statistics, Jan.-Dec. 2004	
Governance and participation			
No. of accredited Pos	51	Presdl.Comm. for the Urban Poor (PCUP),2004	
IRA, 2004 (in million pesos)	231.48	Department of Budget and Management (DBM)	
IRA per capita	495.28	Department of Budget and Management (DBM)	
Election participation	71.74%	COMELEC records & Statistics Div. Report,Jan. 2005	
Risks and vulnerability to natural disasters			
Flood	5	PAG-ASA, PHIVOLCS	
Earthquake	4	PAG-ASA, PHIVOLCS	
Liquefaction risk	4	PAG-ASA, PHIVOLCS	
Ground shaking	3	PAG-ASA, PHIVOLCS	
No. of informal settlers living in danger areas	2,869	HUDCC, 2000	
Solid waste			
Volume of solid waste generated per day (tons per day)	149.1	MMDA	
Collection rate	56.79%	MMDA	

Poverty

Magnitude of Informal Settlers 2008

Classifications	No. of Household/ Location
A. Danger Areas	
1. Roadworks	
2. Waterways	
a. Estero	
b. Creeks	87 – Daang Manunuso
c. Riverways	
d. Others (specify)	49 – Purok VI, Ibayo, Napindan
3. Transmission of Lines	
4. Dumpsites	
5. Concerned Government Buildings	
B. Areas (Government Infrastructure)	213 – DOTC P1A 259 – DOTC P2A 170 – DOT P3A
1. LGU Infrastructure Projects	
a.	667 - PNR Site, Bagumbayan
b.	520 – PNR, Bagong Tanyag
c.	478 – PNR Site, Bagong Tanyag
2. National Government Project	
a.	
b.	
c.	
C. Government-owned Lands	
1. LGU Owned	
2. National Government-owned	102 – Government Lot
D. Privately-owned Lands	
1. With Court Orders	
2. Under Litigations	
3. Others (Specify)	

Number, Location and Nature of Services Offered by Type of Social Welfare Organization

BARANGAY	NO. OF EXISTING DAY CARE CENTERS	NO. OF FAMILIES POVERTY LEVEL	NO. OF PERSONS SERVED	NO. OF SOCIAL WELFARE STAFF/ MEMBERS	SERVICES CAPACITY OFFER
Bagong Tanyag	11	30 %	30 %		
Signal Village	18	30 %	30 %		
Upper Bicutan	20	30 %	30 %		
Western Bicutan	26	30 %	30 %		
Maharlika Village	2	30 %	30 %		
Lower Bicutan	12	30 %	30 %		
Sta. Ana	2	30 %	30 %	120 Day care Workers	
Wawa	2	30 %	30 %	42 Coordinators	
Bambang	1	30 %	30 %	1 Officer-in-Charge	Services and Programs were implemented to the 18 Barangays
Tuktukan	2	30 %	30 %	26 Office Staff	
Ususan	5	30 %	30 %	2 Social Welfare Officer	
Bagumbayan	7	30 %	30 %		
Calzada-Tipas	3	30 %	30 %		
Paligon-Tipas	1	30 %	30 %		
Ligid-Tipas	3	30 %	30 %	191	
Ibayo-Tipas	3	30 %	30 %		
Napindan	2	30 %	30 %		
Hagonoy	3	30 %	30 %		
T O T A L	123	30 % of the total No. of the population	30 % of the total No. of the population		

Health

Taguig-Pateros District Hospital (TPDH)
Located at East Service Road, Western Bicutan, Taguig City

DESCRIPTION	LOCATION
TUKTUKAN HEALTH CENTER (MAIN)	COL. P. CRUZ ST., TUKTUKAN
USUSAN HEALTH CENTER	TOMASA ESTAE SUBD., TOMASA AVE., USUSAN
STA. ANA HEALTH CENTER	LIWAYWAY ST., STA. ANA
CALZADA-TIPAS HEALTH CENTER	RUHALE ST., CALZADA-TIPAS
PALINGON-TIPAS HEALTH CENTER	F. MANALO ST., PALINGON-TIPAS
IBAYO-TIPAS HEALTH CENTER	DR. A. NATIVIDAD ST., IBAYO-TIPAS
NAPINDAN HEALTH CENTER	LABAO ST., PUROK I, NAPINDAN
BAMBANG HEALTH CENTER	INTERIOR MASTRILLI ST., BAMBANG
WAWA HEALTH CENTER	JONES ST., WAWA
HAGONOY HEALTH CENTER	C. P. TIÑGA HALL, M. L. QUEZON ST., HAGONOY
LOWER BICUTAN HEALTH CENTER	M. L. QUEZON ST., LOWER BICUTAN
BAGUMBAYAN HEALTH CENTER	M. L. QUEZON ST., BAGUMBAYAN
BAGONG TANYAG HEALTH CENTER	TANYAG PROPER, BAGONG TANYAG
BAGONG TANYAG HEALTH CENTER	NORTH DAANG HARI, BAGONG TANYAG
BAGONG TANYAG HEALTH CENTER	SOUTH DAANG HARI, BAGONG TANYAG
UPPER BICUTAN HEALTH CENTER	A. BONIFACIO ST., UPPER BICUTAN
UPPER BICUTAN HEALTH CENTER	CENTRAL BICUTAN, UPPER BICUTAN
MAHARLIKA VILLAGE HEALTH CENTER	BRGY. ROAD, MAHARLIKA VILLAGE
SIGNAL VILLAGE HEALTH CENTER	MIRANDA ST., SIGNAL VILLAGE
WESTERN BICUTAN HEALTH CENTER	CHAMPACA ST., WESTERN BICUTAN
TAGUIG CHILDREN CENTER	M. L. QUEZON ST.
*TAGUIG DISTRICT HOSPITAL	EAST SERVICE ROAD, WESTERN BICUTAN

CAUSES OF MORBIDITY AND MORTALITY TAGUIG CITY, C. Y. 2007

	REPORTED CASES	RATE PER 1,000 POP. (CITY)	RATE PER 1,000 POP. (NCR)	LOCAL RATE WITH (NCR)
CAUSES OF MORBIDITY		604,928	10,596,501	
1.URTI	55,709	9,209	5	
1.SKIN DISEASES	4,156	687	0.39	
1.BRONCHITIS	2,567	424	0.24	
1.HYPERTENSION	2,100	347	0.19	
1.DIARRHEA	2,077	343	0.19	
1.PARASITISM	1,223	190	0.11	
1.TUBERCULOSIS (All Forms)	1,147	189.6	0.10	
1.PNEUMONIA	959	158	0.09	
1.ANEMIA	934	154	0.08	
1.CHICKEN POX	114	19	0.01	
 CAUSES OF MORTALITY				
1.HYPERTENSION	161	0.26	0.015	
1.MYOCARDIAL INFARCTION	126	0.20	0.011	
1.CANCER (All Forms)	90	0.14	0.008	
1.PTB	88	0.14	0.008	
1.PNEUMONIA	74	0.14	0.006	
1.DISEASE OF THE HEART	47	0.07	0.004	
1.DIABETES MELLITUS	46	0.07	0.004	
1.ACCIDENT (All Forms)	42	0.06	0.003	
1.BRONCHITIS ASTHMA	25	0.04	0.002	
1.ACUTE HEMORRHAGIC PANCREATITIS	20	0.03	0.001	

SOCIAL INDICATORS/ LOCALITY:

Birth Rates	<u>14/ 1,000 Livebirths</u>
Infant mortality rate / 1,000 live births	<u>2.6/ 1,000 Livebirths</u>
Crude death rate / 1,000 population	<u>2/ 1,000 Livebirths</u>
Fetal death rate / 1,000 live births	<u>3/ 1,000 Livebirths</u>
Mortality / 1,000 population	<u>2.06/ 1,000 Livebirths</u>
Morbidity / 1,000 population	<u>118/ 1,000 Livebirths</u>

*SOURCE: TAGUIG FIRE STATION
City of Taguig

NUTRITIONAL STATUS TAGUIG CITY, C. Y. 2008

BARANGAY	No. of P. S. Weighed	Percent Weighed	Normal	BNL	BNVL	Above Normal	Malnutrition Prevalence Rate 0%
Bagumbayan	5561	100.0 %	5286	182	36	57	3.9 %
Bagong Tanyag	3802	100.0 %	3690	92	16	4	2.8 %
NDHari	1901	100.0 %	1832	57	4	8	3.2 %
SDHari	1901	100.0 %	1655	162	48	36	11.0 %
Lower Bicutan	13262	94.8 %	12730	384	58	90	3.3 %
Upper Bicutan	8212	100.0 %	8022	114	36	40	1.8 %
Western Bicutan	20608	94.8 %	20051	387	98	62	2.4 %
Maharlika Village	2883	100.0 %	2688	122	61	12	6.3 %
Signal Village	18884	100.0 %	18560	242	72	10	1.66 %
Hagonoy	3707	100.0 %	3619	72	9	7	2.1 %
Wawa	1516	100.0 %	1401	50	20	45	4.6 %
Bambang	1085	100.0 %	1035	27	3	20	2.8 %
Ususan	3740	84.8 %	3596	72	16	56	2.4 %
Tuktukan	1402	100.0 %	1385	9	5	3	0.9 %
Sta. Ana	2559	97.8 %	2427	104	18	10	4.76 %
Calzada-Tipas	2563	98.8 %	2524	15	6	18	0.8 %
Palingon-Tipas	1794	96.5 %	1772	17	2	3	1.05 %
Ligid-Tipas	1372	100.0 %	1302	32	12	26	3.2 %
Ibayo-Tipas	3156	100.0 %	2933	175	4	44	5.67 %
Napindan	1984	98.0 %	1835	101	22	26	6.19 %
Central Bicutan	2738	100.0 %	2648	46	6	38	1.89 %
TOTAL	104,630	97.4%	100,991	2,472	552	615	2.89%

No. of Pre-School Children (Est.) 0-71 months : 107,336
 No. of existing BNS 29

PHILIPPINES

Results from the 2000 Census of Population and Housing, NSO

Table A. Distribution of Households and Average Household Size by Region: 2000

Region	Number of Households	Average Household Size
Philippines	15,278,808	5.00
NCR	2,132,989	4.63
CAR	263,851	5.16
I Ilocos	831,549	5.05
II Cagayan Valley	554,491	5.07
III Central Luzon	1,632,047	4.91
IV Southern Tagalog	2,413,043	4.88
V Bicol	893,833	5.24
VI Western Visayas	1,211,804	5.12
VII Central Visayas	1,133,767	5.02
VIII Eastern Visayas	715,070	5.04
IX Western Mindanao	595,831	5.18
X Northern Mindanao	542,071	5.06
XI Southern Mindanao	1,066,199	4.86
XII Central Mindanao	501,870	5.16
XIII Caraga	393,362	5.32
ARMM	393,269	6.13

Source: NSO, 2000 Census of Population and Housing

Most Filipinos were Roman Catholics

Eight out of ten of the household population in the Philippines were

Roman Catholics (81.04 percent)

Islam (5.06 percent)

and **Evangelicals (2.82 percent)** followed.

The remaining 11.08 percent were either Aglipayan, Iglesia ni Cristo, and others.

Close to one million persons with disability

There were about 942,098 persons or 1.23 percent of the total population reported to have some types of disability.

Persons with low vision constituted the highest percentage (37.41 percent), followed by partial blindness (8.14 percent), mental illness (7.14 percent), mental retardation (7.02 percent) and quadriplegic (5.93 percent).

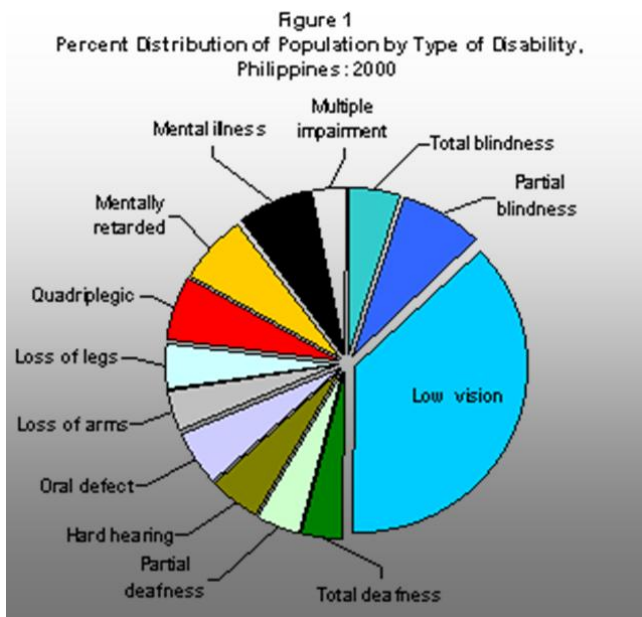


Table B. Literacy Rate of Household Population 10 Years Old and Over by Region and Sex: 2000

Nine out of ten were literate

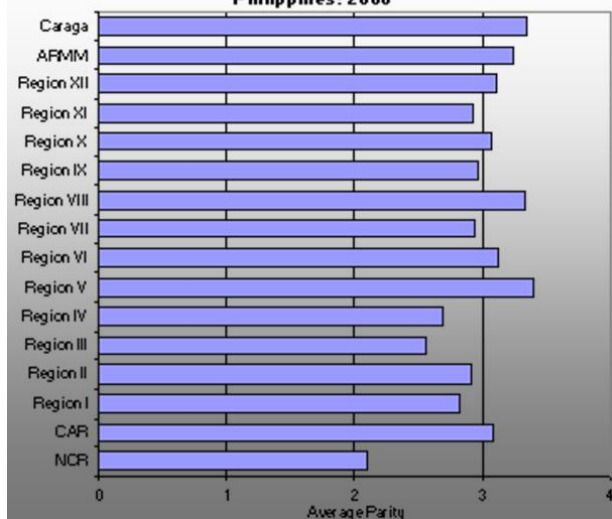
Among household population 10 years and over, 92.28 percent were literate or able to read and write a simple message. **Females (92.47 percent)** literacy rate was almost the same as that of the **males (92.10 percent)**.

Across regions, the NCR had the highest literacy rate at 98.14 percent. Other regions with higher literacy rate than the national level were Ilocos (Region I), 95.23 percent; Central Luzon (Region III), 94.80 percent; Southern Tagalog (Region IV), 94.01 percent; Bicol (Region V), 92.69 percent; and Western Visayas (Region VI), 93.02 percent.

Region	Literacy Rate		
	Both Sexes	Male	Female
Philippines	92.28	92.10	92.47
NCR	98.14	98.17	98.11
CAR	90.51	90.90	90.11
I Ilocos	95.23	95.41	95.04
II Cagayan Valley	91.75	91.43	92.08
III Central Luzon	94.80	94.83	94.76
IV Southern Tagalog	94.01	93.95	94.07
V Bicol	92.69	92.38	93.01
VI Western Visayas	93.02	92.45	93.58
VII Central Visayas	91.65	91.47	91.83
VIII Eastern Visayas	89.92	88.79	91.08
IX Western Mindanao	85.25	85.30	85.21
X Northern Mindanao	91.40	90.73	92.09
XI Southern Mindanao	90.15	89.79	90.52
XII Central Mindanao	87.03	87.05	87.01
XIII Caraga	91.99	91.40	92.61
ARMM	68.73	69.75	67.74

Source: NSO, 2000 Census of Population and Housing

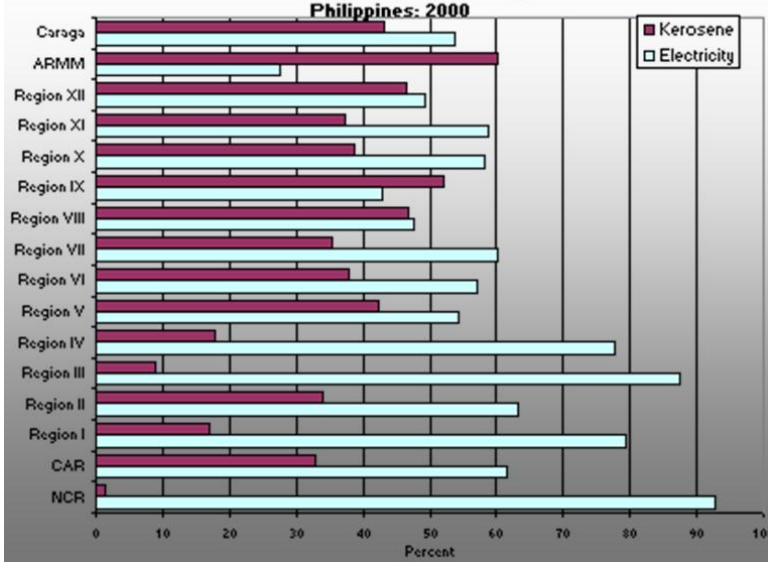
Figure 2
Average Number of Children Ever-born to Married Women 15-49 Years Old by Region, Philippines: 2000



On the average, ever-married women had three children

Of the total ever-married women (15-49 years), the average number of children ever-born was 2.82. In 1990, the average was 3.27 children. Moreover, about 19 percent had two children while 16.67 percent had three children and 16.44 percent with no child at all.

Figure 3
Percent Distribution of Households by Predominant Type of Fuel Used for Lighting by Region, Philippines: 2000



Electricity was the main source of lighting

Electricity (68.21 percent) was the common type of fuel used for lighting by most households in the Philippines. This proportion was higher by 13.15 percentage points from the 1990 figure. About 27.19 percent used kerosene, lower by 15.45 percentage points ten years ago. About 1.23 percent utilized Liquefied Petroleum Gas (LPG) for lighting.

More than three out of four households in four regions used electricity as the main source of lighting. These were, National Capital Region (NCR), 92.67 percent; Central Luzon (Region III), 87.38 percent; Ilocos (Region I), 79.30 percent; and Southern Tagalog (Region IV), 77.70 percent. On the other hand, majority of the households in two regions used kerosene (gaas) as their fuel for lighting. These were Western Mindanao (Region IX), 52 percent and Autonomous Region of Muslim Mindanao (ARMM), 60.12 percent.

Households get water in own used faucet from community water system

The main sources of water supply for drinking and/or cooking of households were own used faucet from community water system (27.34 percent), shared faucet from community water system (19.31 percent) and shared tubed/piped deepwell (15.75 percent).

The same is true for the main source of water supply for laundry and/or bathing, i.e., community water system (27.15 percent), shared faucet from community water system (16.58 percent) and shared tubed/piped deepwell (14.90 percent).

Figure 4
Households by Main Source of Water Supply for Drinking/Cooking, Philippines: 2000

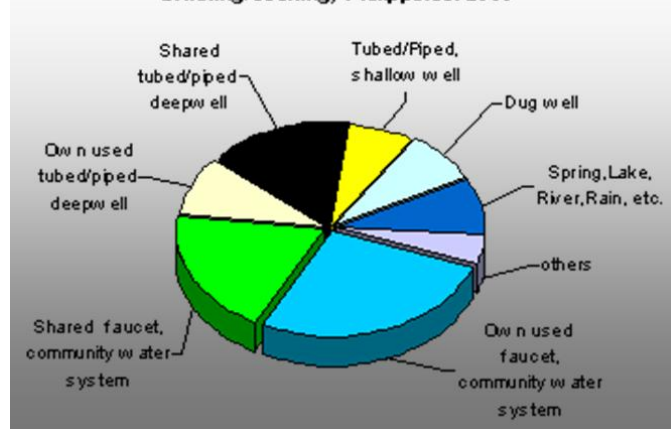
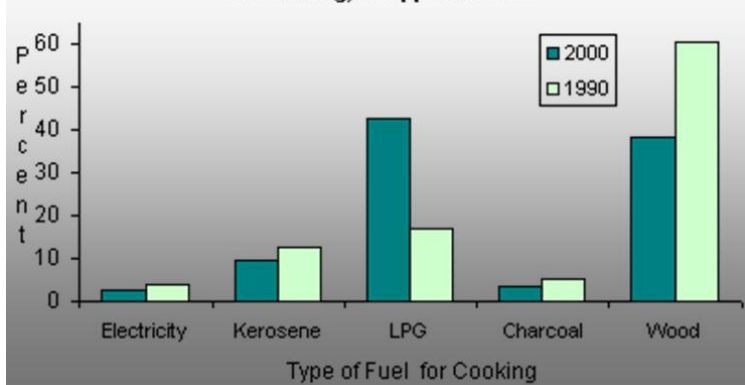


Figure 5
Percent Distribution of Households by Type of Fuel Used for Cooking, Philippines: 2000



Liquefied Petroleum Gas (LPG) was the main source of fuel for cooking

Almost half (42.64 percent) of the households used liquefied petroleum gas as fuel for cooking. This was higher by 25.51 percentage points ten years ago. A large proportion still used wood (38.57 percent), although lower by 21.95 percentage points from the 1990 figure. Kerosene (gaas) on the other hand, was used by 9.68 percent of the total households.

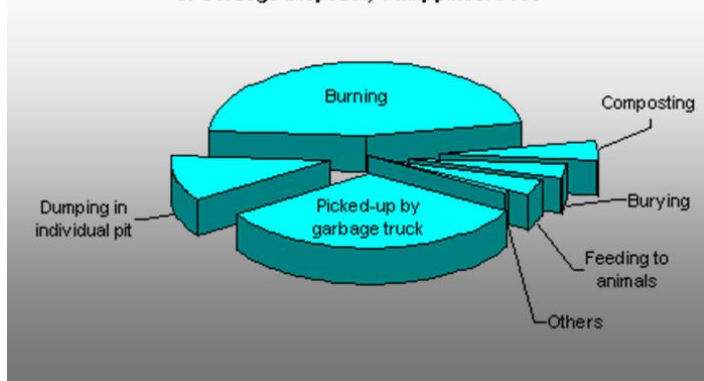
Across regions, the use of LPG dominated in five regions. These were in NCR (71.80 percent), Region III (67.94 percent), Region IV (58.28 percent), CAR, and Region I (53.09 percent). Region II (Cagayan Valley) had 46.74 percent of households using LPG and 45.11 percent, wood. At least 50 percent of the households in the remaining regions used wood for cooking.

Two out of five households used water-sealed with sewer/septic tank as the toilet facility

The proportion of households with water sealed sewer/septic used exclusively by the households was 42 percent. Water-sealed with other depository used exclusively by households (16.52 percent) and closed pit (8.88 percent) followed. Households which did not have any toilet facility accounted for 8.70 percent.

Of the regions comprising the Philippines, at least one out of four of the households in each of the 14 regions had water sealed with sewer/septic tank used exclusively by the households. The remaining two regions used water sealed with other depository used exclusively by the households (Region II, 34.49 percent) and open pit toilet facility (ARMM, 34.03 percent).

Figure 6
Percent Distribution of Households by Usual Manner of Garbage Disposal, Philippines: 2000



Burning was the usual manner of garbage disposal

The most common manner of garbage disposal was burning (46.06 percent). Picked up by garbage truck (32.46 percent) and dumping in individual pit (10.35 percent) followed. The remaining 11.13 percent of households either buried their garbage, feed the garbage to animals, composted or other types of garbage disposal.

In all regions except National Capital Region (NCR), burning was the usual manner of garbage disposal. In NCR, garbage was picked-up mostly by garbage truck (89.55 percent).

Seven out of ten households owned/amortized their housing units

Of the 15.3 million households, majority (71.12 percent) owned or amortized their housing units. Households which occupied their housing units for free with consent of owner constituted 13.40 percent, while 10.10 percent rented their housing units.

For additional information on the results
of the 2000 Census of Population and Housing,
write, call or visit:

NATIONAL STATISTICS OFFICE
P.O. Box 779, Manila, Philippines
Tel. Nos.: (02) 713-7081/715-6430 Fax: 714-1715
Email: info@mail.census.gov.ph

Databank and Information Services Division
2/F Soledad Bldg., R. Magsaysay Blvd.
Sta. Mesa, Manila

Press releases on the Philippines and its provinces
including highly urbanized cities can also be downloaded
from the National Statistics Office website.
<http://www.census.gov.ph>

Philippines, provincial and highly urbanized cities
volumes in print and electronic copies (CD-ROM)
for public use files will also be made available.